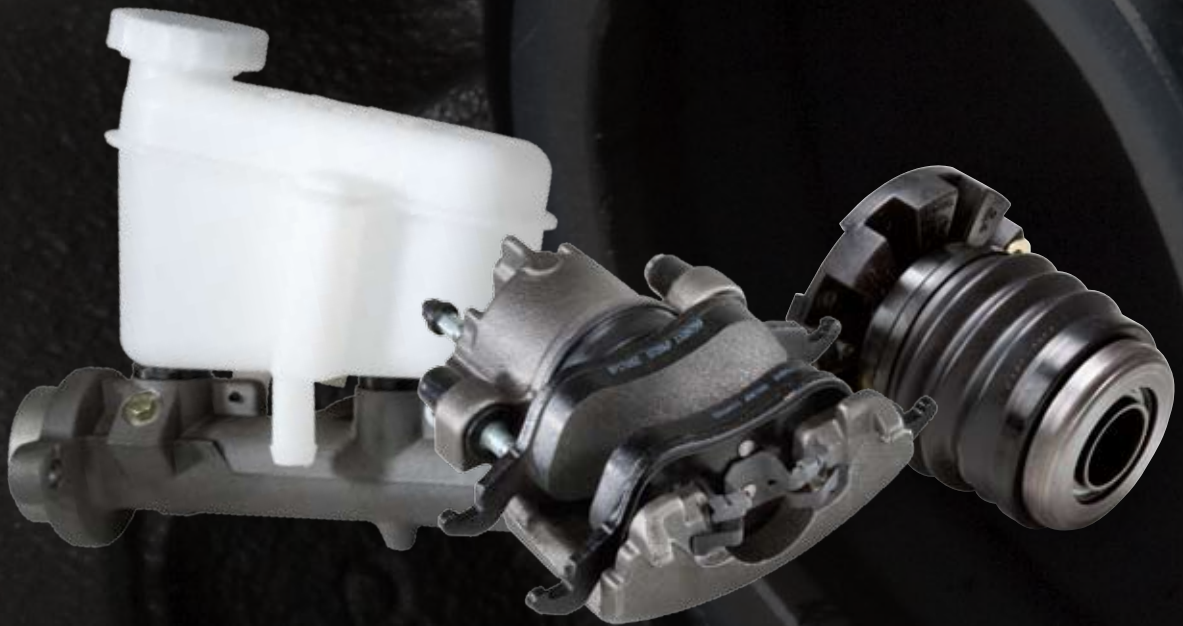


PROFESSIONAL
GRADE™

Raybestos®
The best in brakes®



HYDRAULICS



Shortcuts in materials and manufacturing can bring your hydraulic system to a screeching halt, but one brand of hydraulic parts incorporates the high-quality components and processes necessary to keep you moving – Raybestos® brand hydraulic parts.

Attempting to match OE is where most manufacturers end. With Raybestos® brand master cylinders, wheel cylinders and calipers... that's just the beginning. Each Raybestos® brand brake part undergoes validation to ensure it meets the strictest physical, performance and safety requirements.

- **Performance and Safety Testing**

 - In-house R&D analysis and on-road performance and traffic assessment

- **Ongoing Validation**

 - Daily production auditing and monthly product sampling

- **Meeting or Exceeding the OE Standards for Excellence**

 - ISO/TS 16949 Certification of Accreditation has been earned for every Raybestos® brand hydraulic manufacturing facility

For both traditional domestic and foreign name plate models, Raybestos® brand products remains fully engaged in the entire design, engineering, manufacturing and testing process. When directed by our strict guidelines and procedures, our joint venture manufacturers help us deliver the Aftermarket's most complete line of OE-quality hydraulic parts.

Your customers moving safely down the road and you moving smoothly through your shop – no other brand of hydraulic parts can guarantee a higher level of professional confidence.



PROFESSIONAL GRADE™ LOADED CALIPERS

Our application-specific friction is designed for proper braking performance. Our calipers are 100% pressure tested to ensure safe, leak-free performance with no comebacks. Professional Grade™ premium loaded calipers also utilize a corrosion-resistant, high-temperature synthetic lubricant in critical slide areas to guarantee trouble-free operation.



PROFESSIONAL GRADE™ FRICTION-READY CALIPERS

Professional Grade™ Friction-Ready calipers allow for fewer SKU's than loaded calipers, but ultimately provide the same coverage. They also make it easy for technicians to be application specific — allowing them to customize the friction for the application at hand. But like the loaded version, each Raybestos® brand Professional Grade™ Friction-Ready caliper is 100% pressure tested to ensure safe, leak-free performance.



PROFESSIONAL GRADE™ MASTER CYLINDERS

All Professional Grade™ Master Cylinders are reviewed by our engineering staff to make sure each cylinder includes all the necessary attributes for a quick and easy installation. They check for proper form (material construction), fit (no modifications necessary) and function (performance and safety). All master cylinders are tested using both the SAE J1153 and J1154 testing protocols which ensures Raybestos® brand Professional Grade™ hydraulics are of the highest quality each and every time they are installed.



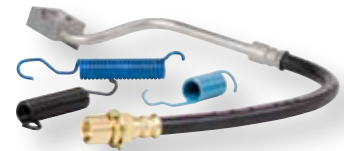
PROFESSIONAL GRADE™ WHEEL CYLINDERS

Professional Grade™ wheel cylinders feature the highest quality rubber components for superior resistance to heat and corrosion and longer service life. All wheel cylinder bleeder screws use a durable trivalent coating to prevent corrosion. In addition, each bleeder screw is hardened so the head area will not strip during bleeding.



PROFESSIONAL GRADE™ CLUTCH HYDRAULICS

All Professional Grade™ clutch hydraulics meet or exceed the performance requirements for each application's proper clutch operation. These cylinders are also tested by lab personnel to deliver unequaled single stroke performance when it counts each and every time you shift.



PROFESSIONAL GRADE™ CABLES AND HARDWARE

Professional Grade™ cables and hardware are manufactured to precise OE requirements in terms of form, fit and function and are then tested for strength, fit, corrosion resistance and durability.



PROFESSIONAL GRADE™ ABS

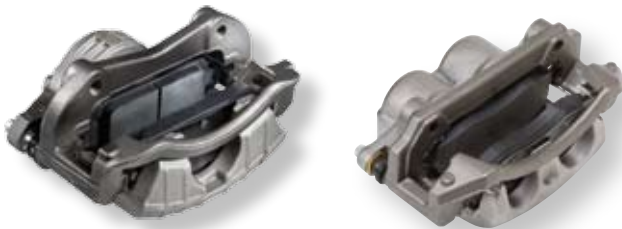
Raybestos® brand Remanufactured Anti-Lock components and new wheel speed sensors meet the necessary performance requirements for each ABS system. They match the original component to properly monitor and control the locking and unlocking of the brake system when actuated.

Raybestos® brand Professional Grade™ calipers provide a perfect OE match in terms of form, fit and function. OE specifications for cast iron or aluminum are also met to ensure proper operation, easy installation and the longest possible life of the product. And with the best overall coverage, Raybestos® brand Professional Grade™ calipers are the perfect choice for both budget-minded and quality-conscious customers.



PROFESSIONAL GRADE™ PREMIUM LOADED CALIPERS

Raybestos® brand provides loaded calipers with premium disc brake pads to satisfy every braking need — and being ready-to-install reduces valuable labor time. Each loaded caliper delivers safe and reliable performance and is built to ensure OE quality in every replacement part.



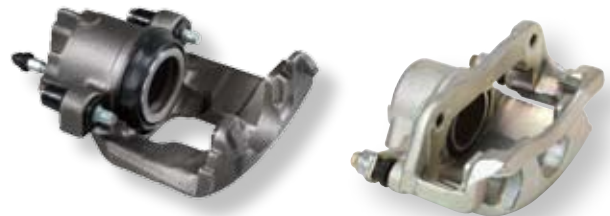
Professional Grade™ Premium Loaded Calipers follow OE specifications and use the best friction replacement available. Before going into the box, each caliper is 100% pressure tested to ensure safe, leak-free performance.

Professional Grade™ loaded caliper assemblies include:

- Application-specific OE-matched friction
- New bleeder screws and copper washers
- New hardware
- Pre-lubrication of critical areas with high temperature synthetic lubricant
- Mounting bolts and sleeves
- New phenolic pistons (where OE is phenolic)
- New EPDM rubber components
- Mounting brackets (where applicable)

PROFESSIONAL GRADE™ FRICTION-READY CALIPERS

If you need to keep inventory to a minimum, Professional Grade™ Friction-Ready calipers allow you to do this by selecting and installing your choice of Raybestos® brand friction. Short of the brake pads, Friction-Ready calipers include everything you need to provide your customer with a complete brake repair and are fully assembled with hardware and mounting brackets — making separate hardware purchase unnecessary and saving you time during the service process.



The following items are also included for safe, leak-free installation:

- EPDM rubber components
- New bleeder screws
- Copper sealing washers
- Mounting brackets (where applicable)

The units are also pre-lubed and, where OE specified, include new phenolic pistons.

Professional Grade™ hydraulic brake master cylinders use both aluminum and iron castings for an exact match to the original equipment design. Technically advanced components ensure safe and reliable braking, so your customers can be certain that their replacement brakes will perform as good as the original equipment.



PROFESSIONAL GRADE™ HYDRAULIC BRAKE MASTER CYLINDERS

Like all Professional Grade™ replacement products, the technically advanced components used in the construction of our master cylinders assure they will perform as good as, or better than, the original equipment — providing safe and reliable braking you can count on.



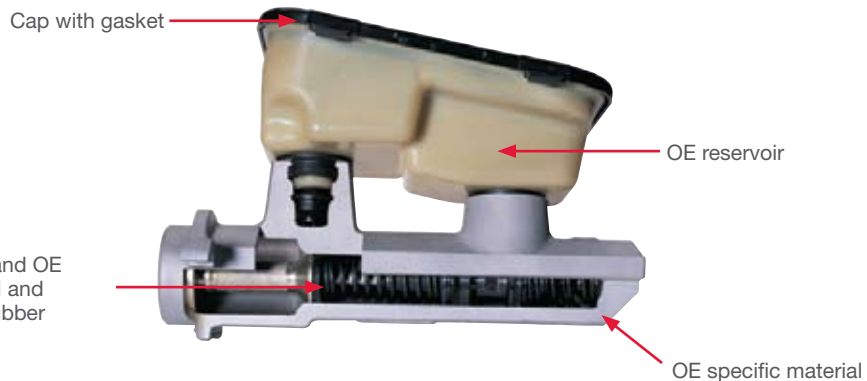
Professional Grade™ hydraulic brake master cylinders use both aluminum and iron castings for an exact match to the OE design. To cut costs, some competitors may replace the original aluminum design with cast iron, but we always replicate the original aluminum design in order to keep the weight of the system even and not stress the brake booster mounting.

Professional Grade™ master cylinders have a smoother bore finish than a typical economy master cylinder. The rougher finish of the economy master cylinder bore can cause premature wear of the rubber seals, which can lead to loose pieces of rubber entering and compromising the ABS system.

Inferior rubber components, as they deteriorate and flake off, can also lead to expensive ABS repairs. Only high-quality EPDM (Ethylene Propylene) and SBR (Styrene Butadiene) rubber compounds are used when manufacturing a Professional Grade™ master cylinder.

The bleeder screws of Professional Grade™ master cylinders are hardened utilizing a durable Trivalent coating to prevent corrosion. Extra steps such as this can increase the service life of the part.

All Raybestos® brand hydraulic brake master cylinders and components meet or exceed OE performance and meet the reliability and performance requirements of SAE J1153 and J1154.



Professional Grade™ wheel cylinders always match the design of a vehicle's original equipment — whether they are aluminum or another vehicle specific metallurgy. They are built for long service life and feature the highest quality components for superior resistance to heat, corrosion and leakage. Professional Grade™ wheel cylinders deliver consistent, safe and reliable performance. Since they are designed to fit exact applications, they will perform as good as the original equipment.



PROFESSIONAL GRADE™ WHEEL CYLINDERS

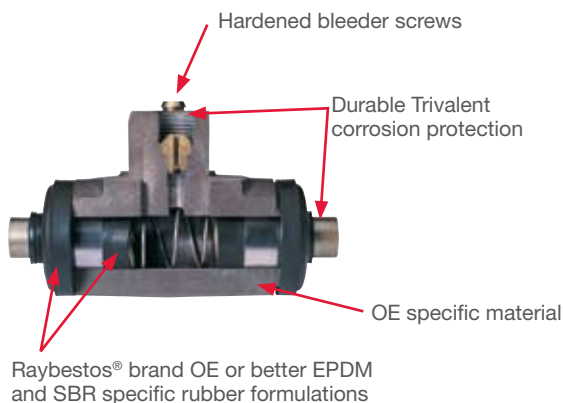
By designing our premium product to fit the application exactly as the original, we promise that each Professional Grade™ premium product will perform as good as the OE part.

Consistent, safe and reliable performance can only be achieved by maintaining vehicle-specific designs. To ensure proper fit, function and safety, Professional Grade™ wheel cylinders match the specific design and metallurgy to the vehicle's original equipment. Each wheel cylinder is built for long service life and features the highest quality components for superior resistance to heat, corrosion and leakage.

Shortcuts are never taken when manufacturing a Professional Grade™ wheel cylinder — we match every detail of the OE design. A perfect example of this can be found in our wheel cylinder boots. To save time and money, some competitors use a soft boot instead of the OE designed hard boot and will even use an outside boot design instead of the mandated inside design, which can lead to interference during operation.

Other OE-style attributes include:

- Match OE, metal for metal, in all areas of design and construction to prevent leak causing corrosion
- Smooth bore finish for proper seal and increased life of rubber parts
- Premium quality EPDM and SBR rubber components
- Bleeder screws are hardened and coated with durable Trivalent for longer service life



PROFESSIONAL GRADE™ CLUTCH HYDRAULICS

Raybestos® brand Professional Grade™ hydraulics provide a perfect OE match in terms of form, fit and function. OE specifications for plastic, cast iron or aluminum are also met to ensure proper operation, easy installation and the longest possible life of the product. And with the best overall coverage, Raybestos® brand Professional Grade™ hydraulics are the perfect choice for both budget-minded and quality-conscious customers.



Our hydraulic products are continually sampled, inspected and tested under SAE guidelines to ensure they meet OE specifications and provide safe, reliable braking.

The complete line of Raybestos® brand Professional Grade™ hydraulics includes clutch master cylinders, slave cylinders and concentric slave cylinders. Our material specific designs utilize cast iron, aluminum and/or plastic for an exact match to the original equipment. Our complete coverage also includes pre-bled units, and those part numbers will continue to increase.

Each clutch hydraulic component also meets SAE J1153 and J1154 reliability and performance requirements — so when you install Raybestos® brand clutch hydraulics— your customers will never be stranded with a clutch system that doesn't function correctly due to hydraulics.

PROFESSIONAL GRADE™ BRAKE HOSES

The full line of Raybestos® brand Professional Grade™ automotive hose products perform to the identical standards set by OE manufacturers. In order to ensure optimal protection, service life and safety, each brake hose meets all FMVSS Standards. In addition to our OE features and superior performance, Professional Grade™ brake hoses are also easier to install than any other Aftermarket brand.

Other premium benefits include:

- Double-crimped fittings afford longer hose life and exceptional durability
- Each brake hose includes every feature you would find on the OE part, including brackets, grommets and molded plastic guards or wire clips

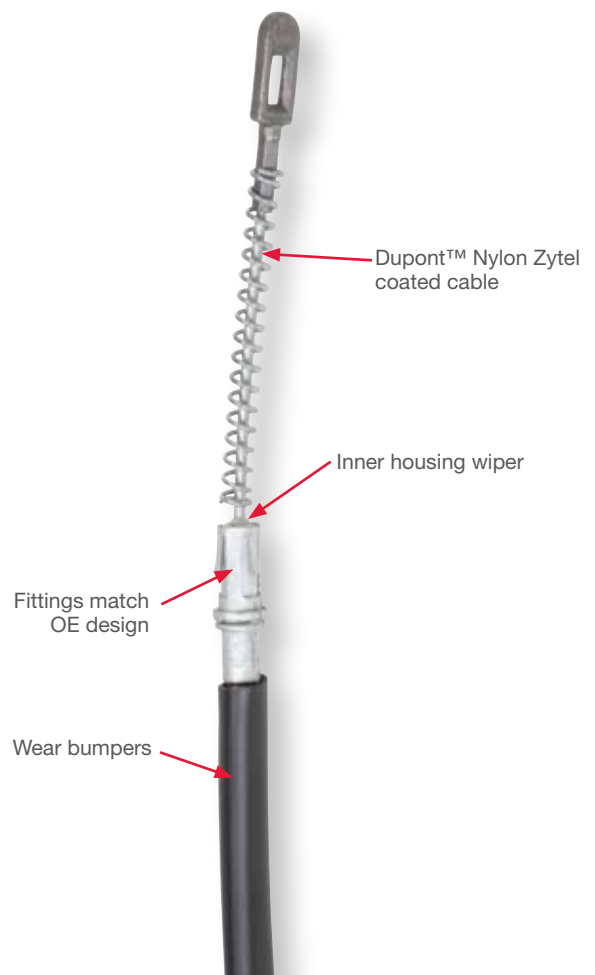


PROFESSIONAL GRADE™ BRAKE CABLES

The designs employed by Raybestos® brand brake cables are the most technically advanced in the Aftermarket. The full line of Professional Grade™ brake cable assemblies are tested for strength, fit and corrosion resistance and meet the standards required by OE manufacturers to ensure optimal protection, service life and safety.

Other premium benefits include:

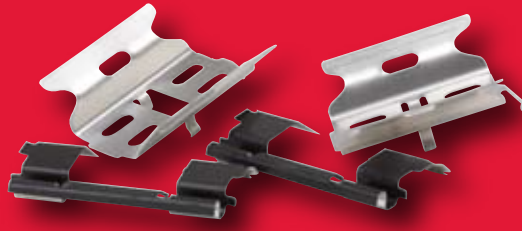
- Dupont™ Nylon Zytel plastic-coated steel brake cables provide superior corrosion resistance to ensure long life and smooth operation
- OE-style brackets and end fittings make installation easy and guarantee a fit identical to that of the original cable



PROFESSIONAL GRADE™ BRAKE HARDWARE

The full line of Raybestos® brand Professional Grade™ hardware provides everything you need to do the job correctly for a safe and complete brake repair. And because each part is engineered to perform to the identical standards set by OE manufacturers, problems like brake squeal, grinding, growling or grabbing brakes can be easily resolved with the right piece of Professional Grade™ hardware.

Professional Grade™ caliper anti-rattle clips, seals, pins and dust boots along with drum shoe return springs, hold down springs and adjuster assemblies help maintain consistent, balanced braking. Instead of taking a one-size-fits-all approach, each piece is manufactured to precise specifications in terms of form, fit and function to provide the highest temperature rating and longest service life.



WARNING: This part should be installed by a qualified mechanic only in accordance with the application(s) specified in our product catalog.

Raybestos® is a registered trademark licensed to Brake Parts Inc. by Raybestos® Products Company.

Value Added Programs

True value comes from a first-rate education in product knowledge and effective selling techniques. We provide our jobbers and installers with the facts they need to get the job done right the first time – increasing customer satisfaction and sales.

Technical Support

At any time during the workday, you have access to the industry's most highly trained and knowledgeable tech support specialists. Our ASE certified representatives are experts in choosing and utilizing the latest parts, tools and equipment. They can be reached by calling 1-900-733-8377 (*rate \$1.75 per minute*). Free to our Raybestos® Brake & Safety Center members.

Training

Throughout the course of the year, we conduct comprehensive training courses for Raybestos® brand products for technicians, shop owners, service managers and counter people. Each group receives world-class training and personal attention in a practical, hands-on environment. Service manuals and CDs with repair information are also provided.

Raybestos® Brand Products Cataloging

Our electronic and paper catalogs recommend the appropriate part for each specific application. This gives the counterperson the ability to quickly and easily recommend the correct part for the job.

The Family of Raybestos® Brand Products

From our rotors, pads, calipers, drums and shoes to our wheel cylinders, master cylinders, hardware, hoses and cables – we offer complete coverage with high-quality products that have proven themselves both in the lab and in the real world.

Our research and development is driven by our “OE or Better” strategy and our in-house engineering is validated by multiple third-party endorsements. Last but not least, the only thing to top our industry-best turnaround time and First-to-Market innovations is our commitment to total customer support.



Affinia Under Vehicle Group
4400 Prime Parkway
McHenry, IL 60050

1-800-274-4631

www.raybestos.com

